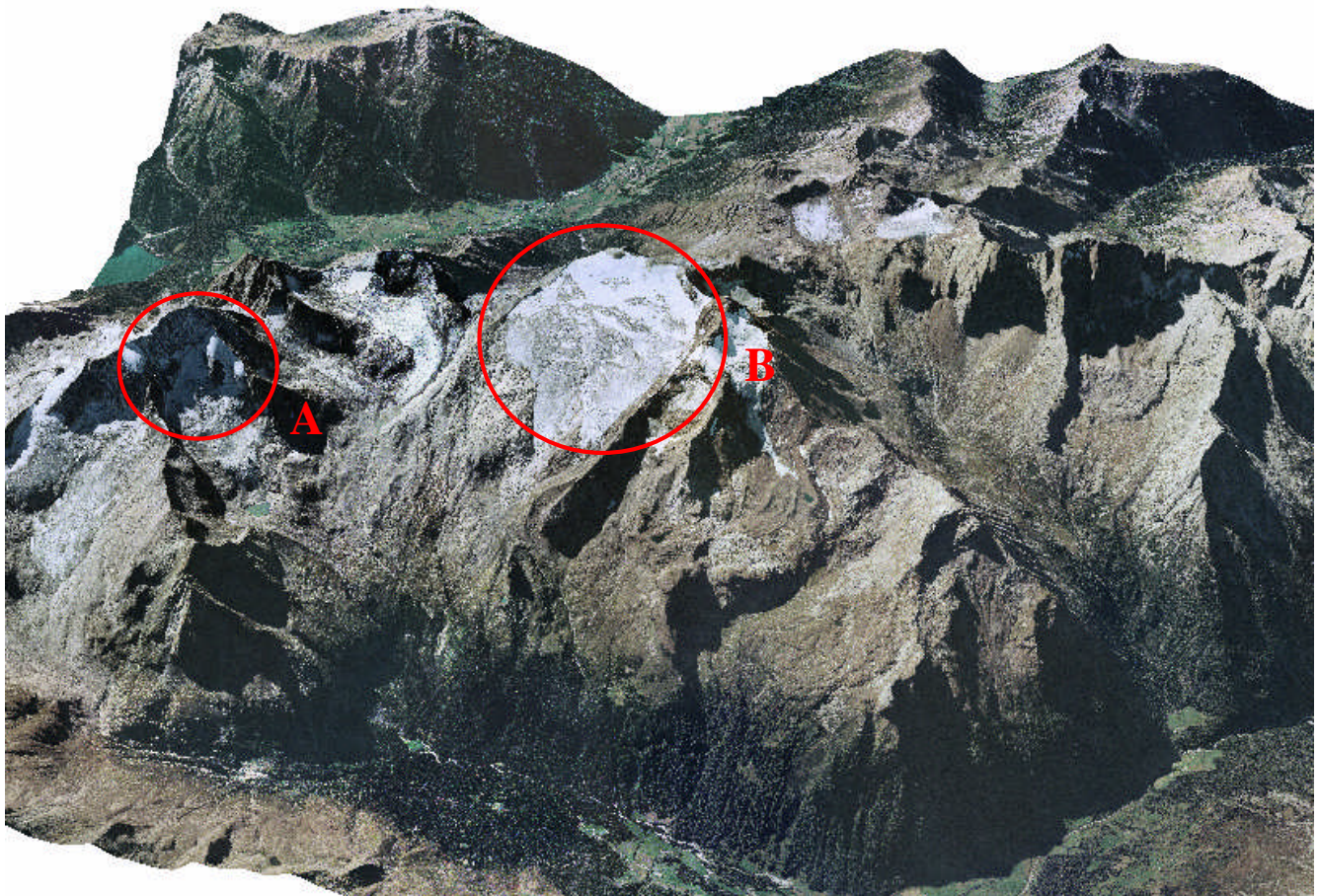




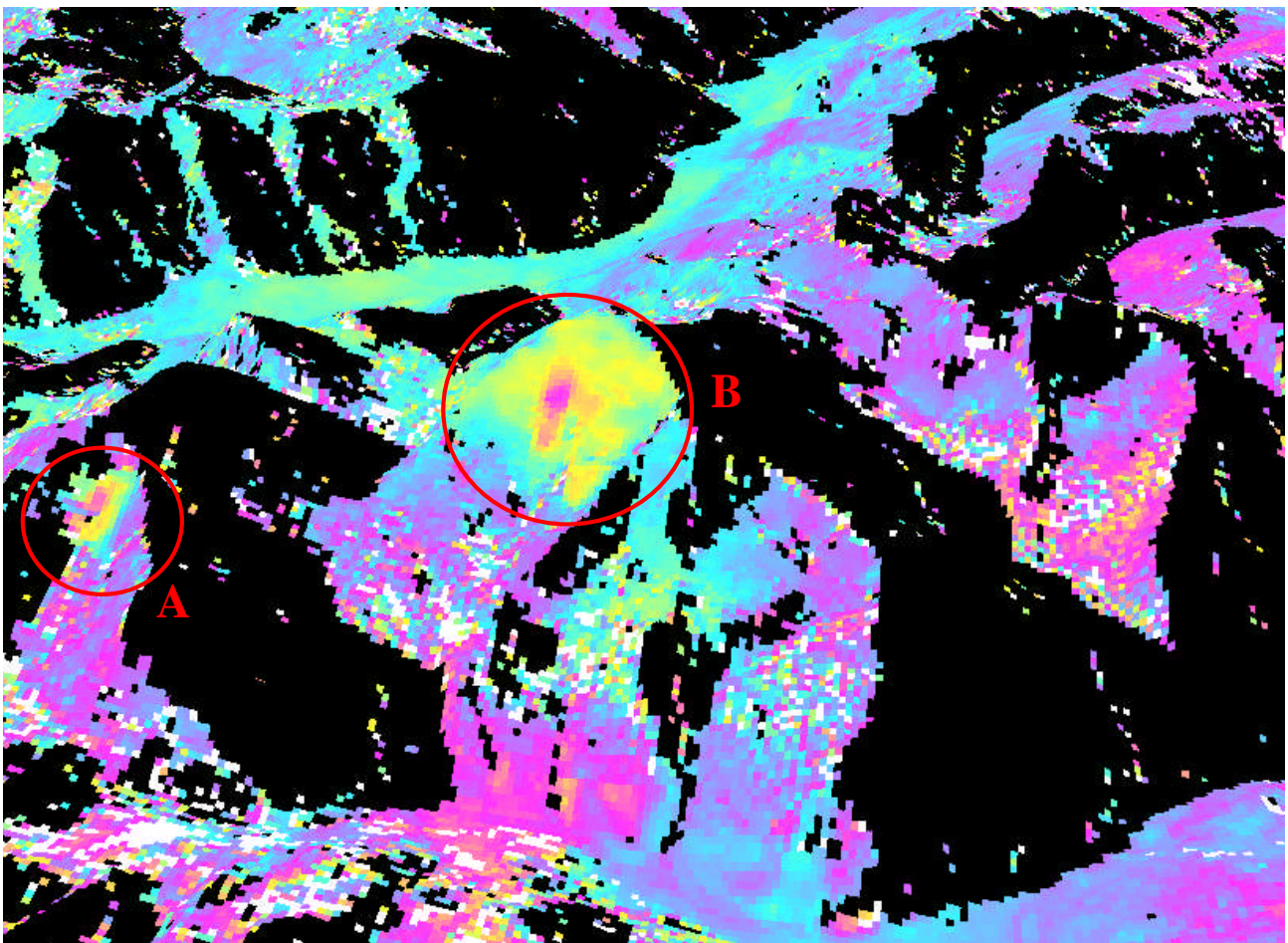
Figure 1: Rieserfernergruppe in Northern Italy in perspective view; colour orthophoto draped over a Digital Elevation Model (DEM). View from South, Red circles indicate areas affected by surface deformation, as analysis with differential radar interferometry reveals (next page).



Processed by Teledata

Figure 2: differential interferograms of ERS1/ERS2 tandem data with 1 day acquisition spacing (ascending track 401 / frame 0927 21/April/1996 – 22/April/1996) and appropriate filtering applied reveal approximately 3 cm of deformation (approximate value, fully quantitative evaluation in process) in some portions of section A and B from one to the next day! Differential interferometric results have been draped also over DEM in equal perspective view.

Phenomena relate to glaciers / rock glaciers. Black areas relate to areas of radar shadow and/or layover / foreshortening.



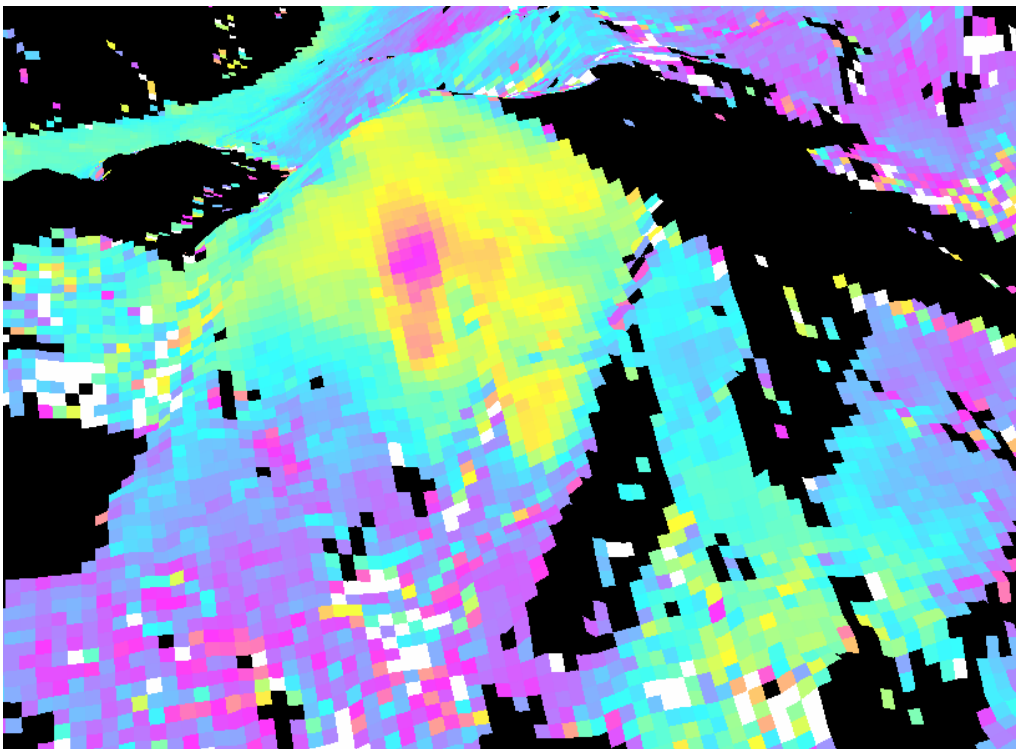
Processed by Teledata

Fig. 3: Closeup of area "B" in orthophoto.



Processed by Teledata

Fig. 4: Closeup of area "B" in DiffSAR analysis.



Processed by Teledata